

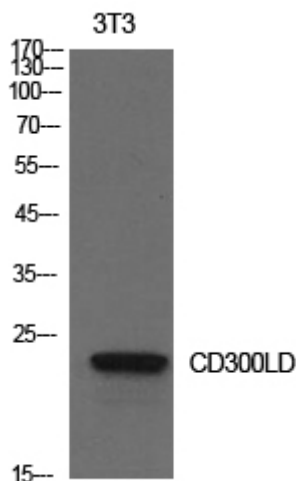


CD300d Polyclonal Antibody

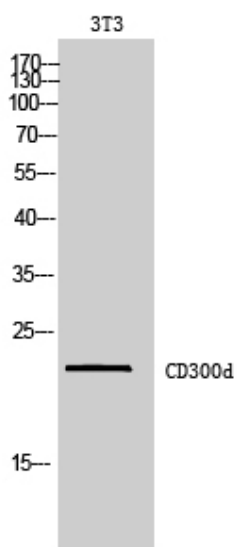
Catalog No	YP-Ab-14080
Isotype	IgG
Reactivity	Human;Rat;Mouse;
Applications	WB;ELISA
Gene Name	CD300LD
Protein Name	CMRF35-like molecule 4
Immunogen	The antiserum was produced against synthesized peptide derived from the Internal region of human CD300LD. AA range:61-110
Specificity	CD300d Polyclonal Antibody detects endogenous levels of CD300d protein.
Formulation	Liquid in PBS containing 50% glycerol, 0.5% BSA and 0.02% sodium azide.
Source	Polyclonal, Rabbit,IgG
Purification	The antibody was affinity-purified from rabbit antiserum by affinity-chromatography using epitope-specific immunogen.
Dilution	Western Blot: 1/500 - 1/2000. ELISA: 1/10000. Not yet tested in other applications.
Concentration	1 mg/ml
Purity	≥90%
Storage Stability	-20°C/1 year
Synonyms	CD300LD; CD300D; CMRF35A4; CMRF35-like molecule 4; CLM-4; CD300 antigen-like family member D; CMRF35-A4; CD300d
Observed Band	22kD
Cell Pathway	Cell membrane ; Single-pass type I membrane protein . Cell surface localization requires the ITAM-bearing Fc receptor FCER1G to overcome ER retention.
Tissue Specificity	Expression seems restricted to cells of myeloid lineage.
Function	similarity:Belongs to the CD300 family.,similarity:Contains 1 Ig-like V-type (immunoglobulin-like) domain.,
Background	similarity:Belongs to the CD300 family.,similarity:Contains 1 Ig-like V-type (immunoglobulin-like) domain.,
matters needing attention	Avoid repeated freezing and thawing!
Usage suggestions	This product can be used in immunological reaction related experiments. For more information, please consult technical personnel.



Products Images



Western Blot analysis of NIH-3T3 cells using CD300d Polyclonal Antibody. Secondary antibody(catalog#:RS0002) was diluted at 1:20000



Western Blot analysis of 3T3 cells using CD300d Polyclonal Antibody. Secondary antibody(catalog#:RS0002) was diluted at 1:20000